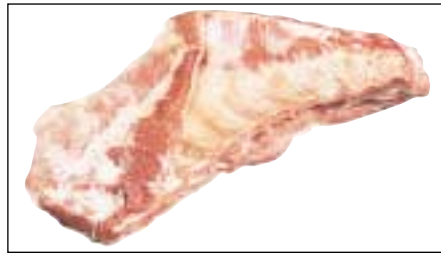


BEEF



181 Stew Meat Cooked



182 Veal Breast



183 Veal Breast Rolled



184 Veal Breast Boneless



185 Veal Chop



186 Veal Chop, Loin



187 Veal Chop, Rib



188 Veal Leg Cutlet



189 Veal Riblet



190 Veal Roast



191 Veal Roast, Crown



192 Veal Roast



193 Veal Roast, Shoulder Arm



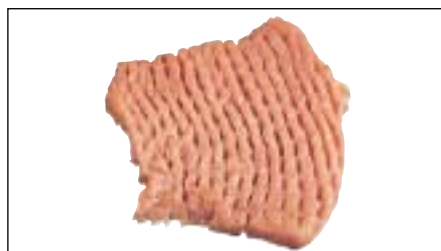
194 Veal Shank



195 Veal Steak, Shoulder



196 Veal Steak, Shoulder Blade



197 Veal Steak, Cubed



198 Veal Cutlet