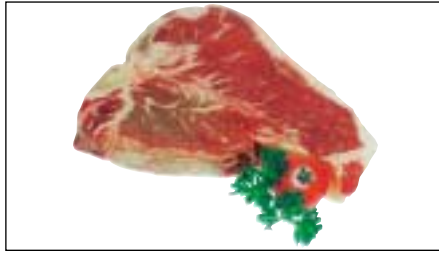


BEEF



163 Steak, Sirloin



164 Steak, T-Bone



165 Steak, T-Bone



166 Steak, T-Bone Cooked



167 Steak, T-Bone



168 Steak, T-Bone



169 Steak, Tenderloin



170 Steak, Thin



171 Steak, Top Blade



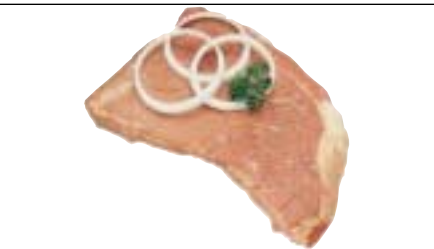
172 Steak, Top Loin



173 Steak, Top Round



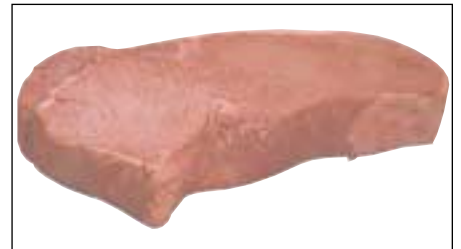
174 Steak, Top Round Cooked



175 Steak, Top Round



176 Steak, Top Sirloin



177 Steak, Top Round



178 Stew Meat



179 Stew Meat (for Taco)



180 Stew Meat