

# BEEF



**109** Steak, Chuck 7-Bone



**110** Steak, Chuck Boneless



**111** Steak, Chuck Eye



**112** Steak, Chuck



**113** Steak, Chuck Shoulder



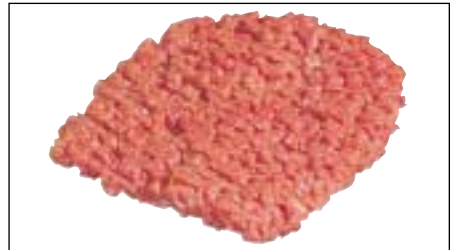
**114** Steak, Chuck Shoulder



**115** Steak, Chuck Boneless



**116** Steak, Cubed



**117** Steak, Cubed



**118** Steak, Cubed



**119** Steak, Diesmillo



**120** Steak, Frank



**121** Steak, Frank



**122** Steak, Frank



**123** Steak, Frank Rolled



**124** Steak, Frank



**125** Steak, Flap Meat



**126** Steak, Flap Meat